

Sustainable Credentials

Advanced Performance
Windows and Doors



Collaborative Commitment

Profile 22 is the UK's leading PVC-U window and door systems company boasting more than 30 years' experience in the social housing new build and refurbishment sector - making it ideally positioned to offer comprehensive unbiased advice and guidance.

We take our corporate social responsibility and environmental policy seriously and are committed to ensuring sustainable communities for all - both now and in the future.

Climate change is a challenge we need to address at a local, national and international level. At Profile 22 we are dedicated to ensuring we work collaboratively with all stakeholders to assist in the UK's commitment to the Kyoto Protocol, whilst ensuring a better quality of life and Decent Home for all.



Specification advantages:

- Over 30 years' experience of the social housing new build and refurbishment market place.
- Comprehensive specification information guide, including all product and legislation details available on CD.
- Extensive choice of low maintenance PVC-U windows, doors, curtain walling, ancillaries and SAFEWARE hardware.
- Offers added value through its team of customer support and technical specialists.
- Designed and tested to meet all relevant industry standards and Building Regulations to ensure optimum quality and durability.
- National network of manufacturers and installers with specific expertise in the social housing sector.
- Member of the Epwin Group, the UK's second largest manufacturer of PVC-U and PVC-Ue extrusions, operating 30 brands across the UK and employing over 2200 people.

Supporting A Better Quality Of Life

The Best Windows
Are Made From
Profile 22



The Government's 'Building a better quality of life' document in 2000, outlined the strategy for more sustainable construction in the UK.

It has been further added to by the introduction of the Decent Homes programme and Code for Sustainable Homes.

Because the government is the single largest UK client, responsible for 40% of UK construction. Stringent targets have been set for all public sector construction, with suppliers meeting these requirements in order to win contracts.

Profile 22 and its parent company, Epwin Group has long since been committed to supporting Government policy and looking to ensure its projects and operations meet national and local needs, supporting the sustainable development of communities.

Importantly the company actively looks to ensure the involvement of all stakeholders, the protection of the environment and the reduction of consumption of energy and natural resources.

Sustainability Integration

As an experienced supplier to the commercial sector Profile 22 is committed to ensuring all elements of its business are in line with the principles of sustainability, evolving its structure to provide complete project management for both new build and refurbishment environments.

Sustainable Future
For All
Communities

The process involved in the supply of products for sustainable construction involves all materials that are utilised being manufactured by the most environmentally friendly methods with minimum impact upon the environment, it may even use recycled material in its production.

We understand that clients wish to use materials and systems that have a lower fundamental impact on both the environment and local communities. The more efficient use of energy and materials is essential with minimal impact on the local community and excellent whole life costings, with products being sustained for longer periods of time with negligible maintenance requirements.



Profile 22 is committed to integrating the three key elements of sustainability:

- Economic sustainability concerns the increase of profitability by making more efficient use of resources, whether human, natural or energy.
- Social sustainability recognises the needs of everyone affected by a project, within the supply chain, and importantly the end-users and local communities.
- Environmental sustainability considers the protection of the environment from the impact of the emissions and waste, and the careful use of natural resources.

Social Responsibility:

- Integration of social, environmental and economic sustainability.
- Adherence to the requirements of the Environmental Management System BS EN ISO 14001:2004.
- Operation of a health and safety programme in line with OHSAS 18001 to ensure a safe environment for employees, supply chain partners and residents.
- Member of the BPF Windows Group, ensuring best practice across the industry, engagement with local and national government and open dialogue.
- Commitment to supporting local communities across the UK, supporting all project stakeholders and ensuring we deliver positive outcomes for all.
- Support of local and national charities.
- Committed to providing equal employment opportunities across the UK and providing training.
- Compliance to latest Building Regulations and quality standards across our product ranges and quality control processes.



Environmental Management

Profile 22 operates an environmental policy that is implemented by all our employees and follows a programme of continual improvement by the operation of an Environmental Management System to the requirements of BS EN ISO 14001:2004.

We operate a continual programme of improvement and annually reviewed objectives and targets facilitates the successful operation of this policy at Profile 22 and across the Epwin Group in line with latest Government guidelines.



Our Environmental Management Includes:

- Reduction of waste levels from company processes, and where practical, recycling waste materials. All scrap material levels are monitored and reduced in accordance with quality procedures and strict targets.
- Operation of office recycling including materials such as paper, ink cartridges, batteries and mobile phones with collections in aid of charity.
- Monitoring energy use and energy efficiency, including the development and enhancement through a continual programme of improvement.
- Monitoring fuel use and promoting fuel efficiency, through technology, careful planning and careful driving for all deliveries and field based employees.
- Provision of detailed employee environmental training, induction and procedures relevant to their task and responsibilities.
- Ensuring our activities have minimal impact on local communities and do not create a nuisance to our neighbours.
- Comprehensive supplier selection process to ensure we work with companies who share our environmental commitment.
- Customer and client advice and support on optimising their environmental management.

Life Cycle Optimisation

Sustainable Whole Life Costings

Profile 22 and its supply chain partners are committed to the environment and offering sustainable whole life costings for improved communities throughout every stage of production to site, through both its manufacturing processes and through its products.

The Building Research Establishment (BRE) has given PVC-U a reference service life of 35 years. More impressively still, the British Standards Institute suggest that this extends to in excess of 40 years when PVC-U profile is manufactured to accredited standards.

Given that research shows that each PVC-U product can be recycled more than 10 times and still maintain performance, through the recycled process of PVC-U has a total life span of 400 years, making its credentials as a sustainable material unquestionable.

Life Cycle Advantages:

- We offer sustainable whole life costings.
- The Building Research Establishment (BRE) scoping Study 'Service Life' gives PVC-U a reference service life of 35 years.
- PVC-U manufactured in accordance with BS12608 are expected to last in excess of 40 years according the British Standards Institute (BSI).
- PVC-U maintains performance through the recycling process and has a total life span of 400 years.



High Performance

Profile 22 strongly support the Government's view on energy efficient products. Energy efficient products have a major role to play in reduced household emissions and increasing energy efficiency of existing homes.

Our industry is committed to producing energy efficient products, developing new technology to ensure optimum reduction of heat loss in line with the introduction of Window Energy Ratings (WER), which has been endorsed by the Energy Savings Trust.



Energy Efficient Windows

High Performance Guaranteed:

- Profile 22's energy efficient windows, achieve a window energy rating (WER) of grades, A, B and C'.
- High performance windows reduce heat loss by more than 20%.
Reduces our impact on the environment.
- Energy rated Advanced Performance PVC-U windows are one of the most effective ways to save energy and reduce CO² emissions.
- Can reduce heating bills by an estimated 10% every year.



Energy Window	
70mm PVC-U Casement Window Profile 22 F170 (Rated A)	
	A
Energy Index (kWh/m ² /year) (Energy Index certified by BPERC and based on UK - standard weather. The actual energy consumption for a specific application will depend on the building, the local climate and the indoor temperature)	0
The climate zone is:	UK
Thermal Transmittance (U _{trans})	1.4 W/m ² .K
Solar Factor (g _{sol,win})	0.44 W/m ² .K
Effective Air Leakage (L _{air,win})	0.00 W/m ³ .K
	Reg. No.: 299 www.bfrc.org
<small>This label is not a statutory requirement. It is a voluntary label provided as a reference to allow consumers to make informed decisions on the energy performance of competing products.</small>	

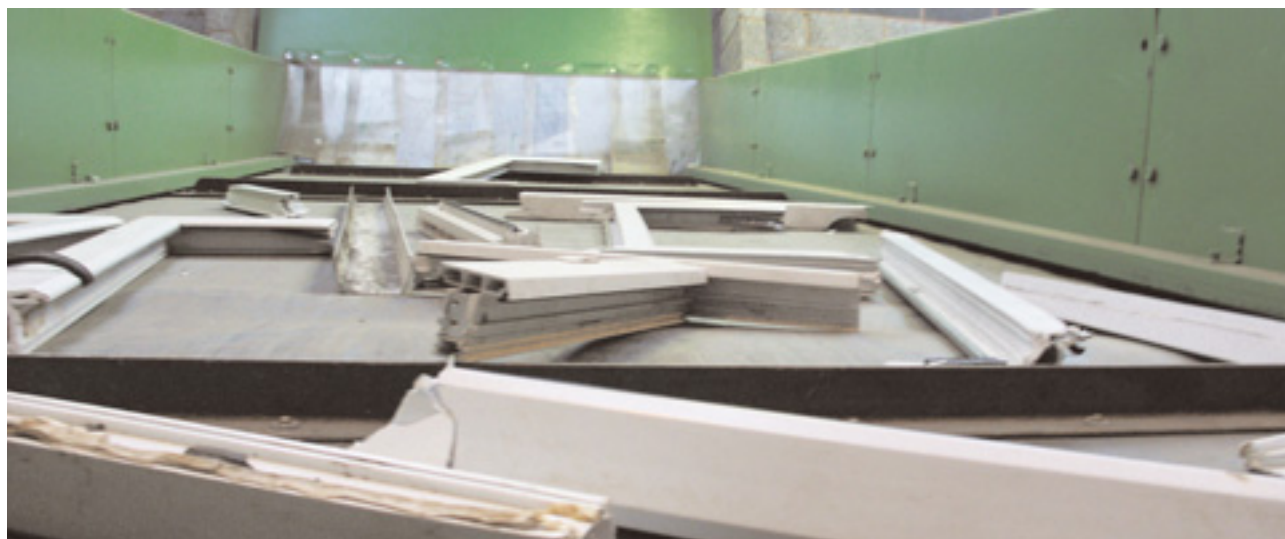
Post Consumer And Post Industrial Recycling

Profile 22 work closely with its sister company, Dekura. Using Dekura, Epwin Group's dedicated waste collection and size reduction company that has sites across the UK, we are able to ensure the economic and efficient recycling of PVC-U. Combining this operation with state of the art cleaning and reprocessing facilities we are able to recycle all the PVC-U material available today.

Our network of contractors all operate a recycling programme and any old products or production off cuts can be re-used for anything from underground pipes to electrical cable trunking.

Dekura has invested several million pounds to create the UK's largest and most advanced PVC-U recycling plant, capable of processing both post industrial and post consumer PVC-U materials.

Once re-processed the PVC-materials are re-used into a wide range of long life building products within our own facilities. Using our skills and processing capability our group has produced the UK's first window made from 100% post consumer waste.



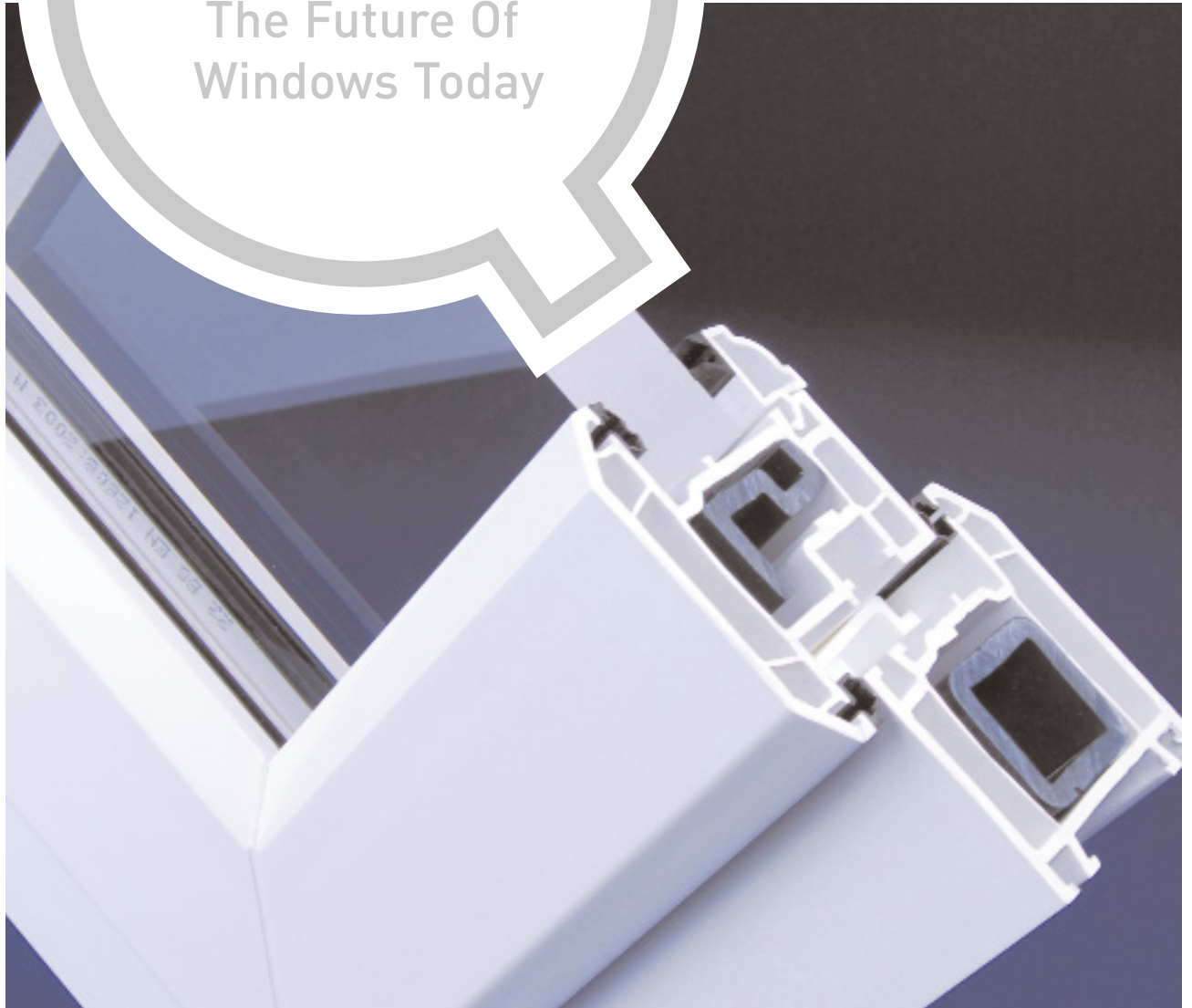
Closed Loop Recycling:

- PVC-U is a multi purpose material and glass and steel in the window unit can also be recovered.
- PVC-U can be recycled over 10 times without deterioration in service performance.
- The PVC-U industry is committed to recycle 100% of collectable waste by 2010 [Vinyl2010].

Design And Innovation

Our technical team is constantly enhancing our range to ensure we deliver advanced performance windows and doors through our national network of manufacturers and installers. This includes the development of our unique Recycled Composite Material (RCM) (patent pending) reinforcement.

The Future Of
Windows Today



100% Recycled Reinforcements

Manufactured from waste PVC-U, the new reinforcement provides a closed loop to the recycling process, offers better thermal efficiency and has a 20%-30% higher weld strength than traditional reinforcement materials.

The benefits of using RCM are overwhelming from every point of view; it is an environmentally-friendly alternative to existing materials with many other advantages besides. It is truly the sustainable choice for Local Authorities, RSL's, Procurement Consortia and contractors, specifically developed by Profile 22 for window and door refurbishment.



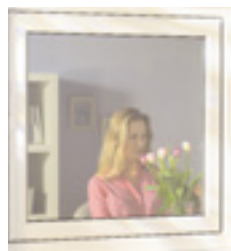
RCM - The Benefits:

- Manufactured from reclaimed composite material, Profile 22's unique and patent pending RCM reinforcement is fully and easily recyclable.
- Delivers 20%-30% increase in corner weld strength.
- It doesn't corrode or rust.
- RCM has a screw pull out value greater than steel.
- RCM makes windows easier to install as it is lighter and windows can be carried more easily.
- The price of RCM is stable.
- RCM is less conductive than steel increasing thermal efficiency making it easier to achieve a higher energy rating.
- It is user friendly, easy to cut and clean, making it easier and safer to handle.
- Approved by WRAP construction products guide.




For More Information
Please Contact Us:

Profile 22 Systems
Stafford Park 6, Telford
Shropshire, TF3 3AT
T : 01952 290910
F : 01952 290460
W : www.profile22.co.uk
E : mail@profile22.co.uk



Printed on 250gsm and 160gsm Take 2 offset
100% recycled and chlorine free

PROFILE 22 is an international PVC-U profile system supplied to local independent manufacturers and installers who contract to install windows, doors and conservatories. PROFILE 22 SYSTEMS cannot be held accountable for manufacture or installation by independent companies. All information in this publication is provided for guidance only and is given in good faith. As it is company policy to continually improve products, methods and materials, changes of specification may be made from time to time without prior notice. This statement does not affect your statutory rights. © PROFILE 22.